

# String names and Notes

Viola

The image displays four musical staves, each representing a different string on a viola. Each staff is in a 3/4 time signature and contains four notes. The notes are labeled with their letter names and fingerings. The A String staff starts with a natural A (fingering 0), followed by B (1), C# (2), and D (3). The D String staff starts with a natural D (0), followed by E (1), F# (2), and G (3). The G String staff starts with a natural G (0), followed by A (1), B (2), and C (3). The C String staff starts with a natural C (0), followed by D (1), E (2), and F (3).

String	0	1	2	3
A String	A	B	C#	D
D String	D	E	F#	G
G String	G	A	B	C
C String	C	D	E	F

# Scale Sheet #1

Viola

1 D Major

5 G Major (Lower octave)

9 G Major (upper octave)

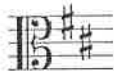
13 C major (Lower octave)

17 C major (upper octave)

21 A major

25 A major

# Key Signature D MAJOR

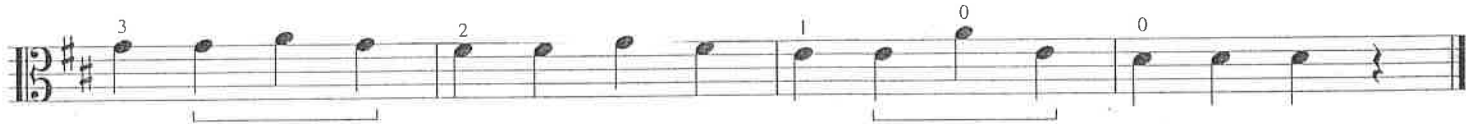


A **key signature** tells us what notes to play with sharps and flats throughout the entire piece. Play all F's as F# (F-sharp) and all C's as C# (C-sharp) when you see this key signature, which is called "D Major."

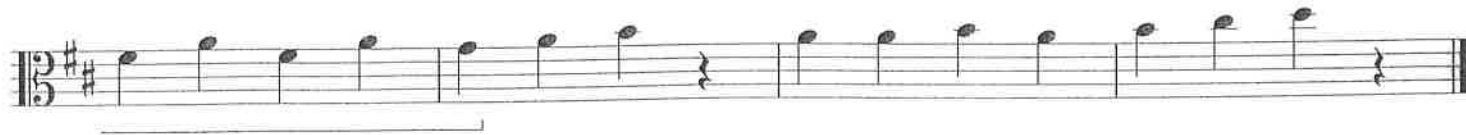
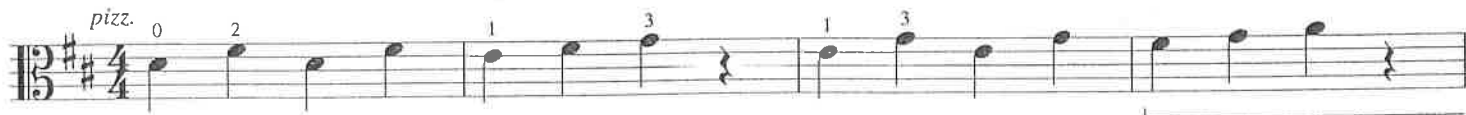
## 44. MATTHEW'S MARCH



△ Play F#s and C#s when you see this key signature.



## 45. CHRISTOPHER'S TUNE



## 63. SCALE SIMULATOR *Remember to count.*



## 67. PEPPERONI PIZZA



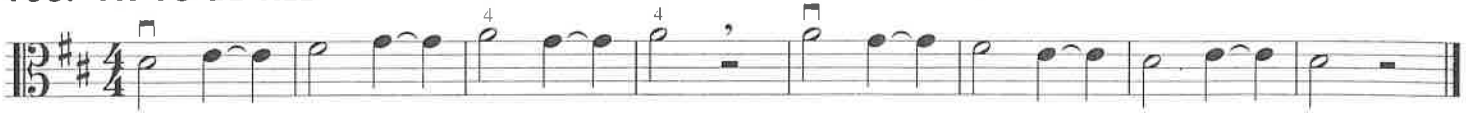
# Tie



A tie is a curved line that connects notes of the **same** pitch. Play a single note for the combined counts of the tied notes.



## 108. FIT TO BE TIED

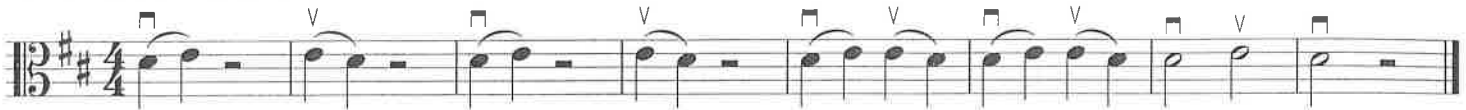


# Slur



A slur is a curved line that connects two or more **different** pitches. Play slurred notes together in the same bow stroke.

## 109. STOP AND GO



## 110. SLURRING ALONG



## 111. SMOOTH SAILING



## 112. D MAJOR SLURS



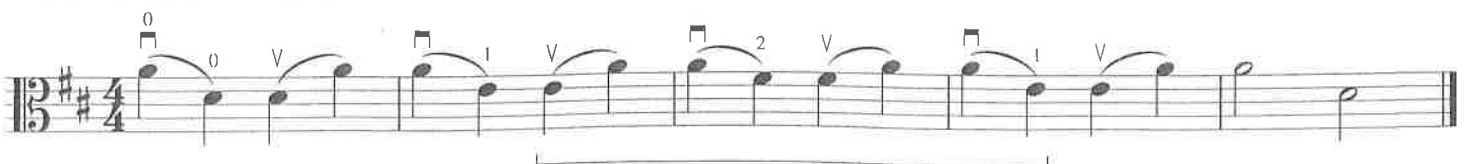
## 113. CROSSING STRINGS



## 114. GLIDING BOWS



## 115. UPSIDE DOWN

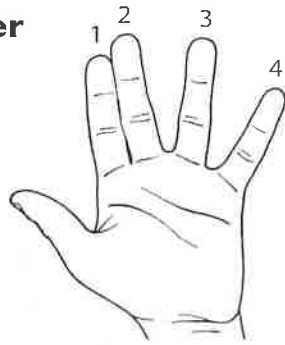


# NEW FINGER PATTERN

## Low 2nd Finger

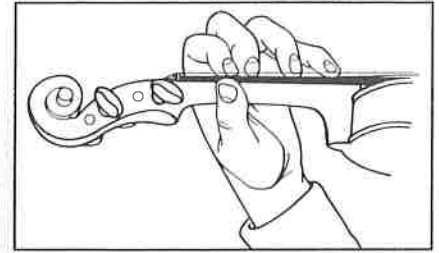
### Step 1

Shape your left hand as shown. Be certain your palm faces you. Notice your 2nd finger lightly touches your 1st finger.



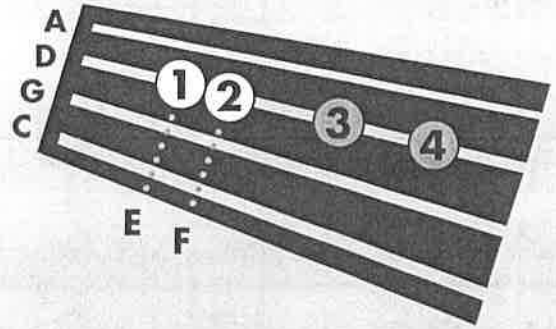
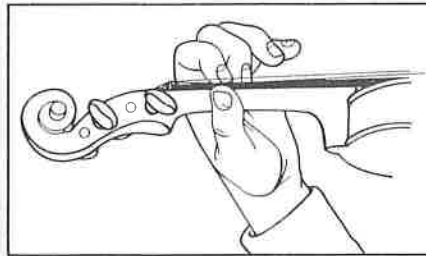
### Step 2

Bring your hand to the fingerboard. Your 1st and 2nd fingers touch. There is a space between your 2nd and 3rd fingers, and between your 3rd and 4th fingers.



## F

is played with low 2nd finger on the D string.



## Listening Skills

Play what your teacher plays. Listen carefully.

### THEORY

## Natural



A natural sign cancels a flat (b) or sharp (#) and remains in effect for the entire measure.

## 126. LET'S READ "F" (F-natural)

### F



### THEORY

## Half Step

A half step is the smallest distance between two notes.

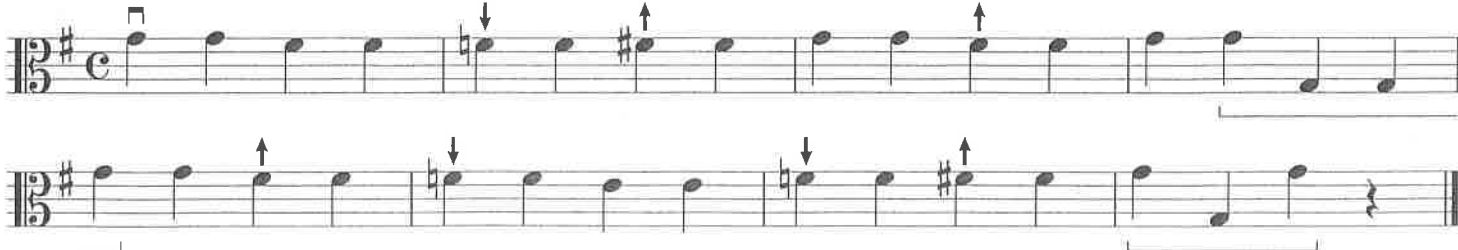
## Whole Step

A whole step is two half steps combined.

## 127. HALF-STEPPIN' AND WHOLE STEPPIN'



## 128. SPY GUY



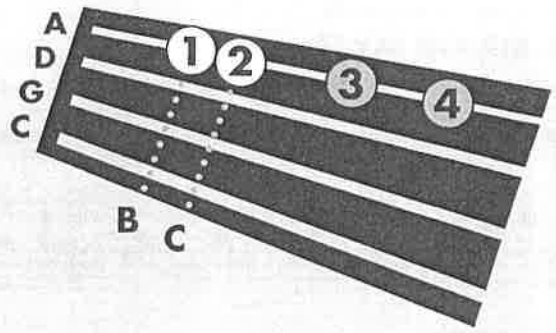
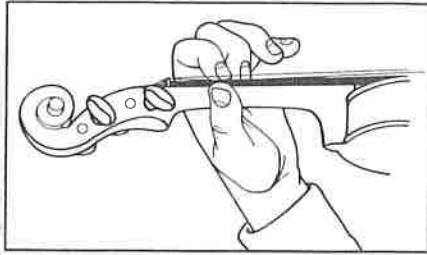
## 129. MINOR DETAILS



**Low 2nd Finger On The A String**

Shape your left hand on the A string as shown.

**C** is played with low 2nd finger on the A string.



**Listening Skills**

Play what your teacher plays. Listen carefully.

**130. LET'S READ "C" (C-natural)**

**C** Musical notation for exercise 130, showing a sequence of notes on the A string with fingerings and bowing marks.

**131. HALF STEP AND WHOLE STEP REVIEW**

Musical notation for exercise 131, illustrating half steps and whole steps between notes on the A string.

**Chromatics**

**Chromatic notes** are altered with sharps, flats, and naturals. A chromatic pattern is two or more notes in a sequence of half steps.

**THEORY**

**132. CHROMATIC MOVES**

Musical notation for exercise 132, showing chromatic moves with arrows indicating the direction of the half-step changes.

**133. THE STETSON SPECIAL**

Musical notation for exercise 133, featuring a sequence of notes with downward bowing marks.

**134. BLUEBIRD'S SONG**

*Allegro*

Texas Folk Song

Musical notation for exercise 134, including a folk song melody with various bowing and fingering instructions.

### 101. BAA BAA BLACK SHEEP

Moderato

Musical score for 'BAA BAA BLACK SHEEP' in G major, common time. The score consists of two staves. The first staff has a treble clef and the second has a bass clef. The music features a simple melody with a bass line. There are several '4' fingerings and 'V' (vibrato) markings throughout the piece.

### 152. LONG, LONG AGO

Moderato

T.H. Baily

Musical score for 'LONG, LONG AGO' in G major, common time. The score consists of two staves. The first staff has a treble clef and the second has a bass clef. The music features a simple melody with a bass line. There are several '4' fingerings and 'V' (vibrato) markings. A specific instruction is given: '4 4th finger on C string = open G pitch'.

### 162. SHEPHERD'S HEY

Moderato

English Folk Song

Musical score for 'SHEPHERD'S HEY' in G major, 2/4 time. The score consists of one staff with a treble clef. The music features a simple melody with a bass line. There are several '4' fingerings and 'V' (vibrato) markings.

### 166. ESSENTIAL ELEMENTS QUIZ - ACADEMIC FESTIVAL OVERTURE THEME

Moderato

Johannes Brahms

Musical score for 'ESSENTIAL ELEMENTS QUIZ - ACADEMIC FESTIVAL OVERTURE THEME' in G major, 2/4 time. The score consists of one staff with a treble clef. The music features a simple melody with a bass line. There are several '4' fingerings and 'V' (vibrato) markings.

### 176. POP GOES THE WEASEL

Allegro

American Folk Song

Musical score for 'POP GOES THE WEASEL' in G major, 3/4 time. The score consists of two staves. The first staff has a treble clef and the second has a bass clef. The music features a simple melody with a bass line. There are several '4' fingerings and 'V' (vibrato) markings.

# Dynamics

Dynamics tell us what volume to play or sing.

*f* (forte)

Play loudly. Add more weight to the bow.

*p* (piano)

Play softly. Remove weight from the bow.

## 181. FORTE AND PIANO

Musical notation for exercise 181, Fortissimo and Piano. The piece is in 3/4 time. It starts with a fortissimo (*f*) dynamic and a violin (*v*) marking. The melody consists of quarter notes and rests, alternating between fortissimo and piano (*p*) dynamics. The piece ends with a repeat sign.

## 182. SURPRISE SYMPHONY THEME

Andante

Franz Josef Haydn

Musical notation for exercise 182, Surprise Symphony Theme. The piece is in 3/4 time and marked Andante. It is in the key of C major. The notation is in bass clef and includes dynamics of piano (*p*) and fortissimo (*f*). It features violin (*v*) markings and fingerings (4, 5). The piece includes a repeat sign and a double bar line.



## SKILL BUILDERS – Scales and Arpeggios

Add your own dynamics to any of the lines below.

### 183. D MAJOR

Musical notation for exercise 183, D Major scale. The scale is in 2/4 time and starts on D4. It includes a violin (*v*) marking and a repeat sign.

### 184. G MAJOR

Musical notation for exercise 184, G Major scale. The scale is in 2/4 time and starts on G4. It includes a violin (*v*) marking and a repeat sign.

### 185. G MAJOR (Upper Octave – violin)

Musical notation for exercise 185, G Major scale (Upper Octave – violin). The scale is in 2/4 time and starts on G5. It includes a violin (*v*) marking and a repeat sign.

### 186. C MAJOR

Musical notation for exercise 186, C Major scale. The scale is in 2/4 time and starts on C4. It includes a violin (*v*) marking and a repeat sign.

### 187. C MAJOR

Musical notation for exercise 187, C Major scale. The scale is in 2/4 time and starts on C4. It includes a violin (*v*) marking and a repeat sign.



# First Scale March

VIOLA

Mark Williams

**Allegro**

1 2 3 4 V 5 6 7 8 9 10 11 12 13 14 15 16 17 18 19 20 21 pizz. 22 23 24 25 26 27 28 29 arco 30 31 32 33 V 34 V 35 36 37 38 39 40 V 41 42 43 44 45 46 47 48 49 50 51 52 53 54 55 56 57 58 59 60 61 62 V Stomp Feet!

Copyright © MCMXCVIII by Highland/Etling Publishing,  
a division of Alfred Publishing Co., Inc.  
All rights reserved. Printed in USA.

# Kabuki Dance

VIOLA

Richard Meyer

1-2 **Andante** 3 pizz. *p* 4 5 6 7 8 9

10 11 12 13 14 15 16

17 18 19 arco *f* 20 21 22 23 24

25 26 27 28 pizz. *p* 29 30 31 32 *rit.* *a tempo*

*To Coda* 37 **Allegro** 38 39 *p*

40 41 42 43 44 45 46 *f*

47 48 49 50 51 52

53 54 55 56 57 58

59 60 63 61 62 64 65 *p* *f*

66 67 68 69 70 71 *rit.* 72 *D. S. al Coda*

*Coda* 73 74 75 76 77 78 arco *rit.*

Copyright © MMIV by Highland/Etling Publishing,  
a division of Alfred Publishing Co., Inc.  
All rights reserved. Printed in USA.  
www.alfred.com

# Winter from *The Four Seasons*

(for Solo Violin, Viola, or Cello with Strings)

SOLO VIOLA

Antonio Vivaldi

Arranged by Tim McCarrick

**Serenely, not too slowly**

1-2 3 *f* 4 V V

5 6 7 *mf* *lyrically* 8 1 2 III 2 3 I 3 4

9 10 11 V Hi 3 12 *cresc.* V

13 14 15 *f* 16 V

17 V 1 4 3 4 19 V V *mf* 20 V

21 V Hi 3 V V V V

22 23 24 V

25 *cresc.* 26 27 28 *f*

29 V V V V 30 *p* 31 4 V V *f* 32 V

33 V V V (V) 34 *ff* 35 36 *p*

# Winter from *The Four Seasons*

(for Solo Violin, Viola, or Cello with Strings)

VIOLA

Antonio Vivaldi

Arranged by Tim McCarrick

Serenely, not too slowly

1 *p*

2

3

4 *simile*

5

6

7 *mp*

8

11

9

10

11 *mf*

12

13

14 *cresc.*

15

16

19

17

18 *f*

19 *mp*

20

21

22

23

24

28

25 *cresc.*

26

27

29 *f*

30

31 *p*

32

33 *f*

34

35

36 *pp*

# ACCENTS

for String Orchestra

Viola

Robert S. Frost

Allegro moderato (♩ = 120)

The musical score for Viola consists of 36 measures, organized into seven systems. The key signature is one sharp (F#) and the time signature is 4/4. The tempo is marked 'Allegro moderato' with a quarter note equal to 120 beats per minute. The score includes various dynamic markings: *f* (forte), *mf* (mezzo-forte), and *f* (forte) at the end of measure 25. A crescendo is indicated from measure 21 to 25 with the text 'poco a poco cresc.'. Accents (>) are placed above many notes throughout the piece. Measure numbers 1 through 36 are printed above the notes. Some measure numbers (9, 17, 25) are enclosed in boxes. The score ends with a double bar line at the end of measure 36.

Any reproduction, adaptation or arrangement of this work in whole or in part without the consent of the copyright owner constitutes an infringement of copyright.  
©1982 Neil A. Kjos Music Co., Park Ridge, Ill.

Inter. Copyright Secured All Rights Reserved Printed in U.S.A.

37 38 39 40 41

*mf*

42 43 44 45 46

*f*

47 48 49 50

*f*

51 52 53 54

*p* *cresc.* *poco rit.*

Tempo I

55 56 57 58 59

*f* *f*

60 61 62 63 64

*ff*

65 66 67 68 69

*f* *pizz.*



VIOLA

# CANYON SUNSET

by John Caponegro

Moderato

Ⓐ A Tempo

mf rit. mf

Ⓑ mf

Ⓒ f poco agitato

Ⓓ Tempo I

rit. mf

Ⓔ

mf

2 rit. pp

VIOLA

# MYSTERIOSO

By ROBERT W. SMITH (ASCAP)

**Bold!**

1 *f* 2 3 *mf* 4 5 6 7 *f*

8 9 10 11 **11** Mysterious, with motion *f* *mf* 12 13 14

15 *mp* 16 17 18 19 20 21

23 22 24 25 26 27 28

31 **Bold!** 29 30 31 32 33 34 35 *f* *mf* *f*

39 **Mysterious** 36 37 38 39 40 41 42 *f* *mf*

47 43 44 45 46 47 48 49

55 **Building** 50 51 52 53 54 55 56 *mp*

57 58 59 60 61 62

**Bold!** 63 *f* 64 65 66 67 *ff* 68



# Petite Tango

VIOLA

C. B. (Casey) KRIECHBAUM Jr.

Moderato  
*pizz*

5 *f* *p*

9 *p*

13 *arco* *f* 17 *f*

21 *pizz* *p*

25 29 *arco* *f*

33 *v*

37 41 *v*

45 *arco* *p*

49 *p* *f*